

Square pumps

Type SQ



Usages:

The pumps are suitable to transfer liquids containing impurities measuring up to 2-3 mm. The hydraulic components, namely the impeller in nylon and the scroll in cast iron allow the pumps to be used with water, emulsions and oily substances in general with a maximum viscosity of 3° Engler (21 CST) and a maximum temperature of 70° c.

They are usually used on:

Machine tools (milling machines – lathes)

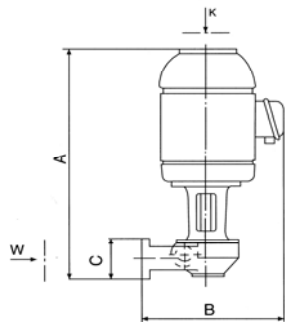
Surface treatment systems (de-oilers)*

They should be installed on the side of the tank to allow the liquid to enter straight into the suction mouth (see Figure).

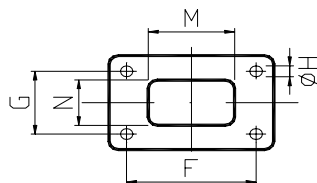
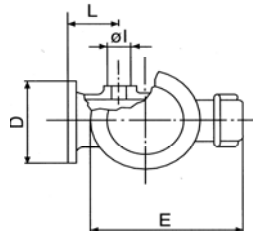
In cases where the liquid is particularly dirty, the user is recommended to construct the tank in compartments to allow the dirt to deposit before it is stirred up by the pump.

For other usages you are advised to consult our technical office

***version with cone in cast iron**



Vista secondo K



	M	N
SQ 56 - 63	50	30
SQ 71 - 80	80	40

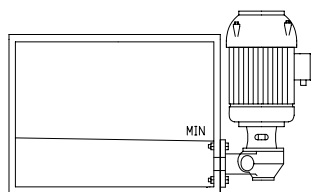
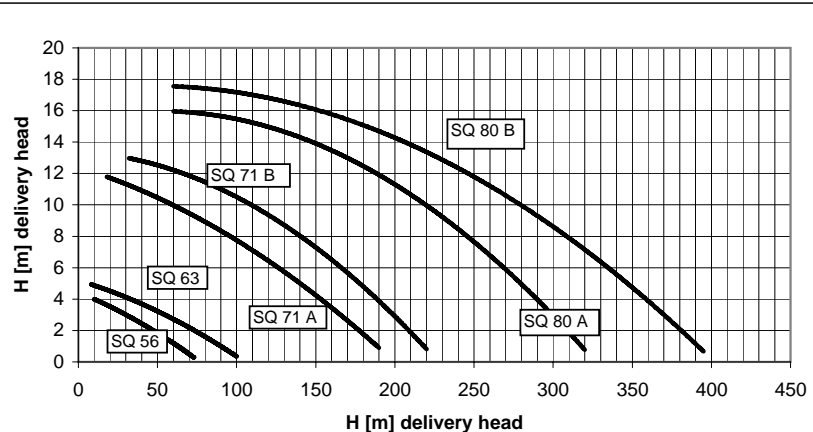


Table of dimensions and weights

TYPE	A mm	B mm	C mm	D mm	E mm	F mm	G mm	ØH mm	ØI mm	L mm	Kg.
SQ 56/S	265	170	60	95	140	75	45	7	3/8" 1/2"	51	3,87
SQ 63/S	300	180	60	95	158	75	45	7	3/8" 1/2"	51	4,95
SQ 71A	330	245	80	145	175	115	60	9	1"	62	14,50
SQ 71B	330	245	80	145	175	115	60	9	1"	62	15,20
SQ 80A	335	250	80	145	210	115	60	9	1 1/4"	62	16,30
SQ 80B	335	250	80	145	210	115	60	9	1 1/4"	62	17,30

Electrical features

Type	Kw Input	Hz. 50		Hz. 60			
		230/400	254-290/440-500	230/400	208-230/440-460	254-290/440-500	318-346/550-600
SQ 56/S	0,16	0,9/0,55	0,7/0,4	1,1/0,64	0,98/0,57	0,9/0,55	0,74/0,42
SQ 63/S	0,30	1,0/0,58	0,76/0,44	1,2/0,7	1,1/0,6	1,0/0,58	0,8/0,45
SQ 71A	0,53	2,4/1,4	1,94/1,12	3,0/1,68	3,1/1,8	2,4/1,4	2,0/1,17
SQ 71B	0,78	3,3/1,9	2,6/1,5	4,0/2,3	3,6/2,1	3,3/1,9	2,8/1,6
SQ 80A	1,15	3,3/1,9	2,6/1,5	4,0/2,3	3,6/2,1	3,3/1,9	2,8/1,6
SQ 80B	1,47	4,8/2,8	3,7/2,2	5,8/3,4	5,2/3,0	4,8/2,8	4,0/2,3



The data of this diagram are referred to a viscosity not higher than 5 CST 20° c.