

Submersible pumps

Type IMM 40-50



Usages:

These pumps are suitable for transferring clean liquids containing impurities measuring up to 2-3 mm. The hydraulic components, namely the impeller, scroll and pump body in PBT, allow the pumps to be used with water, emulsions and oily substances with a maximum viscosity of 3° Engler (21 CST).

The temperature of the liquid must not exceed 70° C.

They are usually used on:

- Machine tools (milling machines – lathes –drills)
- Glass-processing machines (TRI version)
- Air-conditioning systems.

They should usually be installed at on a tank, with a capacity in proportion to the flow rate, at about 2 – 3 cm. from the bottom. It is important to check that the maximum level of the liquid in the tank always remains 3 – 4 cm. lower than the flange (see figure).

In cases where the liquid is particularly dirty, the user is recommended to construct the tank in compartments to allow the dirt to deposit before it is stirred up by the pump.

For other usages you are advised to consult our technical office

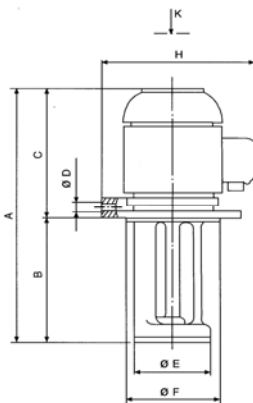
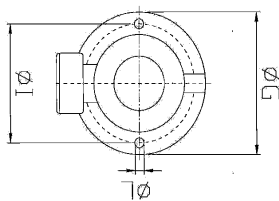


Table of dimensions and weights

| TYPE | A mm | B mm | C mm | ØD | ØE mm | ØF mm | ØG mm | H mm | ØI mm | ØL mm | Kg. |
|--------|---------|---------|---------|------|----------|----------|----------|---------|----------|-----------|------|
| IMM 40 | 224 | 80 | 144 | 3/8" | 78 | 90 | 130 | 140 | 114 | 7 N. 2 | 1,8 |
| | 264 | 120 | | | | | | | | | 1,83 |
| | 294 | 150 | | | | | | | | | 1,85 |
| | 324 | 180 | | | | | | | | | 1,88 |
| IMM 50 | 224 | 80 | 144 | 3/8" | 78 | 90 | 130 | 140 | 114 | 7 N. 2 | 1,8 |
| | 264 | 120 | | | | | | | | | 1,83 |
| | 294 | 150 | | | | | | | | | 1,85 |
| | 324 | 180 | | | | | | | | | 1,88 |



Electrical features

| Type | KW. Input | Hz. 50 | | Hz. 60 | | | |
|--------|--------------|----------|-----------------|----------|-----------------|-----------------|-----------------|
| | | 230/400 | 254-290/440-500 | 230/400 | 208-230/440-460 | 254-290/440-500 | 318-346/550-600 |
| IMM 40 | 0,08 | 0,4/0,23 | 0,35/0,21 | 0,4/0,23 | 0,43/0,25 | 0,4/0,23 | 0,33/0,20 |
| IMM 50 | 0,11 | 0,52/0,3 | 0,4/0,23 | 0,6/0,35 | 0,6/0,35 | 0,52/0,3 | 0,4/0,23 |

